



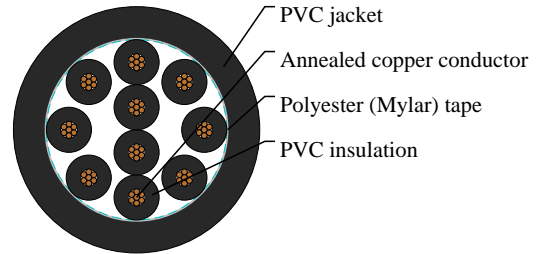
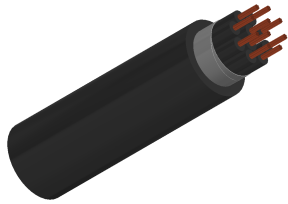
Caledonian

JIS Code Power & Control Cables

www.caledonian-cables.com

marketing@caledonian-cables.com

CVV 10C0.75



APPLICATIONS

For supervisory electrical equipment, station control circuits, outdoor, suitable installation in dry or wet cable trenches.

STANDARDS

IEC 60502-1

CABLE CONSTRUCTION

Conductor: Stranded annealed copper wires

Insulation: Polyvinyl chloride (PVC)

Filler: Non-hygroscopic material(optional)

Binding tape: Polyester (Mylar) tape (optional)

Sheath: Polyvinyl chloride (PVC), Black color (A special flame retardant sheath can be supplied)

COLOUR CODE

Black core with marking numbers

PHYSICAL AND THERMAL PROPERTIES

Maximum conductor temperature 70°C

Circuit voltage not exceeding 600 volts

Test voltage 3500 volts

DIMENSION AND PARAMETERS

| No. of Cores | Nominal Cross-sectional Area | No. and Dia. of Wires | Conductor Diameter | Nominal Insulation Thickness | Nominal Sheath Thickness | Approx. Overall Diameter | Approx. Weight | Min. Insulation Resistance at 70 °C | Max. DC Resistance at 20°C |
|--------------|------------------------------|-----------------------|--------------------|------------------------------|--------------------------|--------------------------|----------------|-------------------------------------|----------------------------|
| | mm ² | no./mm | mm | mm | mm | mm | kg/km | Ohm/km | Ω/km |
| 10 | 0.75 | 7/0.37 | 1.11 | 0.8 | 1.8 | 16 | 270 | 0.0412 | 24.5 |